

**Calico**

# COLORWASH

Tear Sheet



Colorwash is a suspension  
of light and color.



ARISE



ASCEND



DIFFUSE



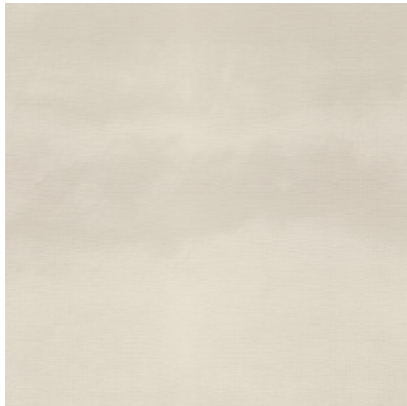
EVANESCE



EVOLVE



TRANSCEND



VANISH

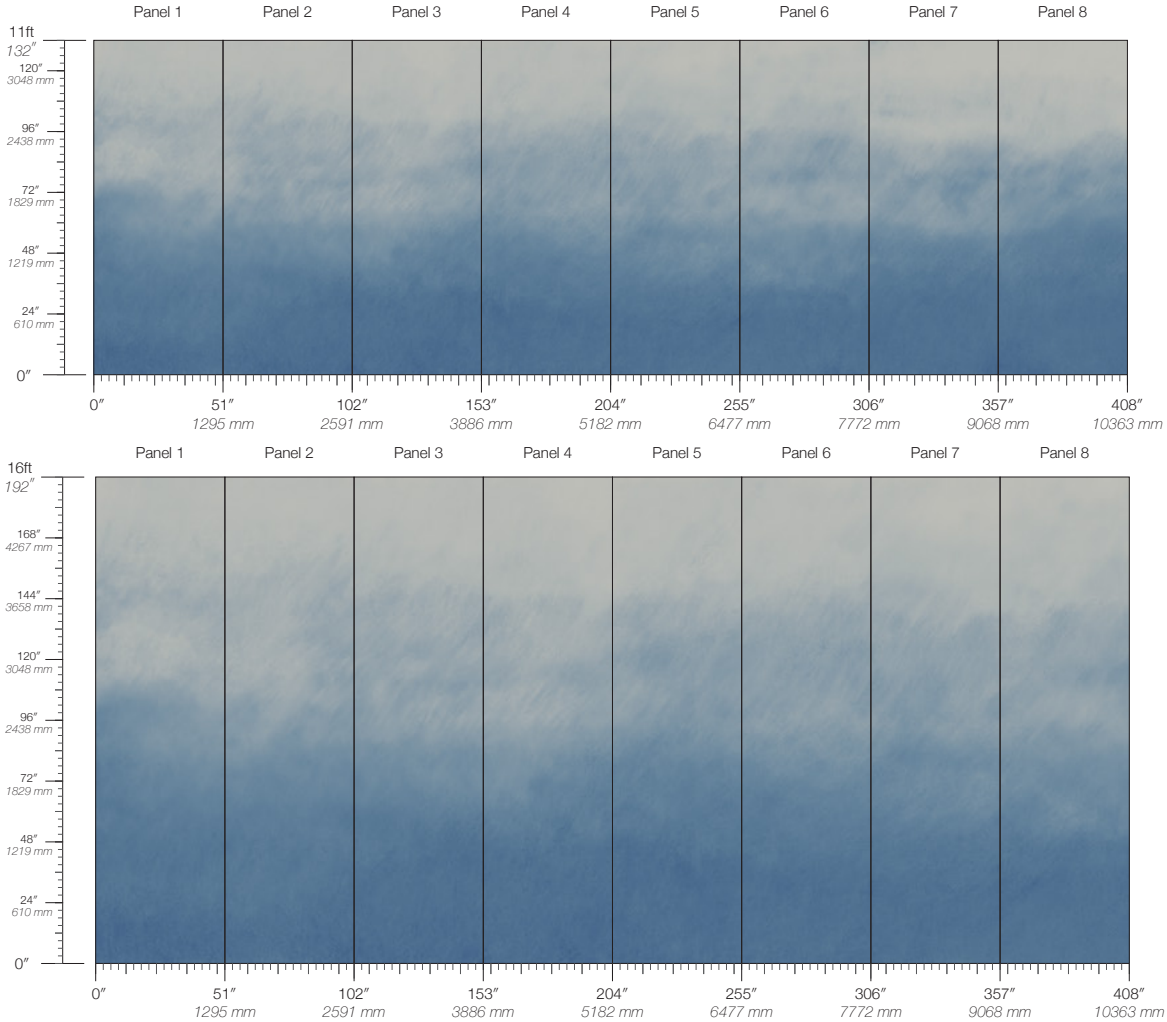


WISP



# Colorwash Evanesce

Suitable for residential and commercial projects



**COLOR**

Evanesce

**ITEM**

4614

**CONTENT**

Type II PVC-Free

**PANEL WIDTH**

51" / 1295 mm trimmed

**PANEL HEIGHT**

132" / 3353 mm standard  
192" / 4877 mm extended

**REPEAT**

Non-repeating

**STOCK**

Made to order

**LEAD TIME**

4 weeks to print

**MINIMUM**

1 panel

**PRICE**

Available upon request

**ORIGIN**

USA

**DETAILS**

Custom options available

**ENVIRONMENTAL**

Recycled Content  
Phthalate Free  
Low VOC  
HPD Available

**SPECS**

Polyester/Natural Fiber face  
Fabric backing  
14 oz per linear yard  
435.2 g per linear meter  
Dappled surface texture

**TESTING**

(US) ASTM E84 Adhered Class A  
CCC-W-408D Type II  
W-101 Type II Class A  
ASTM E96 Procedure B - 66 Perms

**MAINTENANCE**

Water-based cleanser

**CONTACT**

sales@calicowallpaper.com  
+1 718 243 1705  
57 Lispenard Street  
New York, NY 10013 USA

**DISCLAIMER**

Refer to our website to see the full mural artwork. Reference the physical sample for color and texture. Panel maps represent mural artwork only.